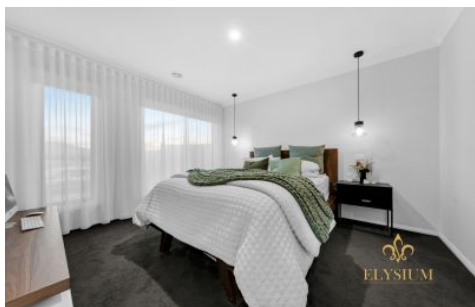


# ELYSIUM



## 36 Unison Drive Clyde VIC

4  2  2 

Elysium proudly presents 36 Unison Drive - a beautifully designed family home situated in the heart of Clyde. This modern residence boasts four spacious bedrooms, providing ample room for a growing family or guests. The master suite features a private ensuite and walk-in wardrobe, ensuring a retreat-like experience, while the additional bedrooms are well-sized and thoughtfully positioned to maximize comfort, family living and privacy.

The heart of this home is its open-plan living area, seamlessly blending the kitchen, dining, and living spaces into a cohesive, inviting environment. The kitchen stands out with its elegant Caesarstone island benchtop, perfect for both meal preparation and casual dining. Equipped with high-quality 900mm appliances, this kitchen will delight any

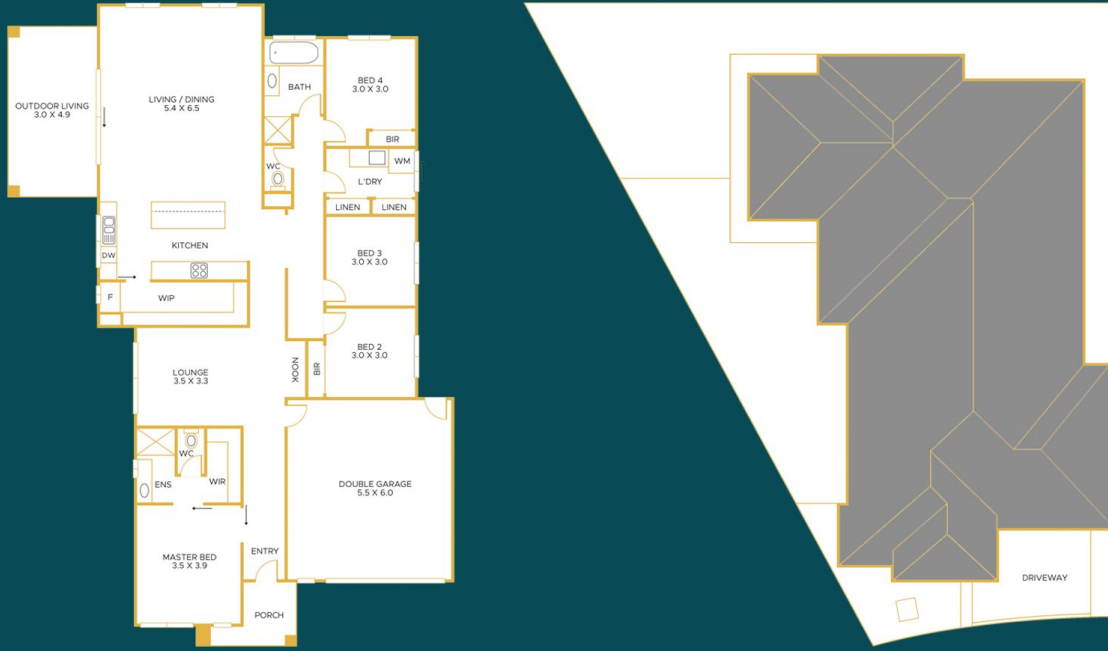
**Type** : House  
**Price** : \$760,000 - \$810,000  
**Land Size** : 512 sqm  
**View** : <https://www.elysiumea.com.au/8104169>



**Dez Mujcic**  
0425 172 033

[For full version visit the website](https://www.elysiumea.com.au)

<https://www.elysiumea.com.au>



## 36 Unison Drive, Clyde

Disclaimer: This floorplan is for illustration purposes only and no warranty is given to its accuracy. Purchasers are advised to carry out their investigations.  
produced by [www.realpixelphotography.com.au](http://www.realpixelphotography.com.au)