



## 32 Tully Crescent Narre Warren VIC

4 2 2

Nestled in the tranquil and family-friendly neighbourhood of Narre Warren, 32 Tully Crescent is a remarkable residence that effortlessly combines modern living with comfortable spaciousness. With 4 bedrooms, 2.5 bathrooms, double garage and a generous 357m<sup>2</sup> land size, this home is a perfect fit for families seeking a harmonious blend of style and practicality.

Upon entering this inviting abode, you'll be welcomed by a sense of space and natural light. The well-designed layout features open plan living, with the kitchen comprising of stone benchtops, walk in pantry, 900mm stove and cooktop and ample cupboard space, all overlooking the dining and living zone with sliding door access to the backyard.

**Type** : Townhouse

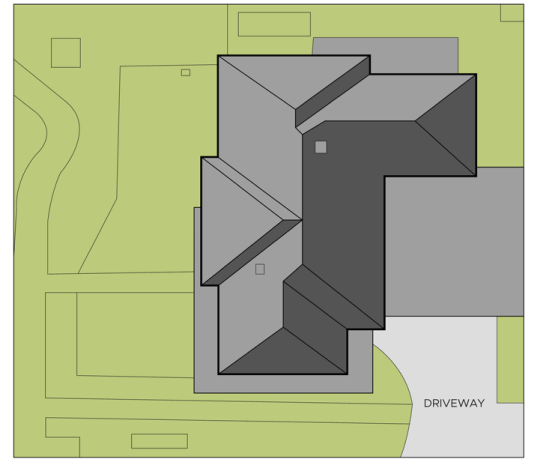
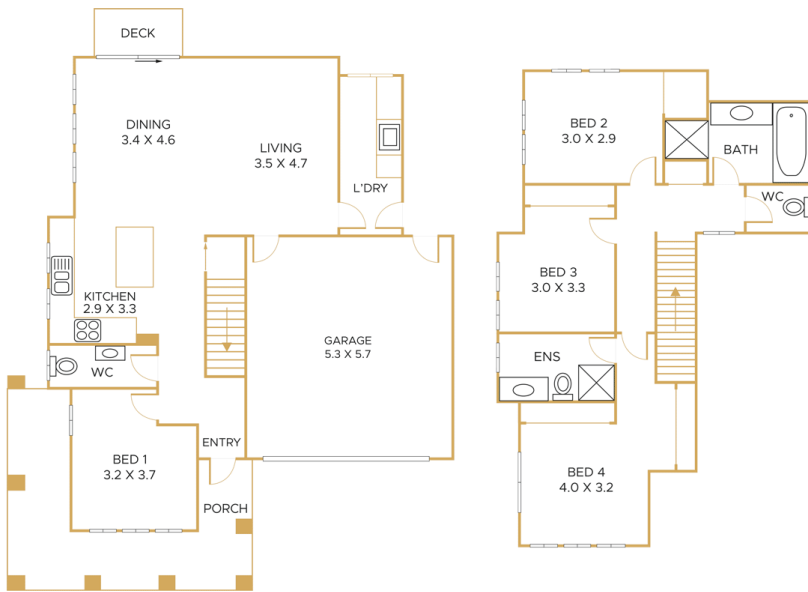
**Price** : \$ 780,000

**View** : <https://www.elysiumea.com.au/8046452>



**Dez Mujcic**  
0425 172 033

[For full version visit the website](https://www.elysiumea.com.au)



## 32 Tully Crescent, Narre Warren

Disclaimer: This floorplan is for illustration purposes only and no warranty is given to its accuracy. Purchasers are advised to carry out their investigations.  
 produced by [www.realpixelphotography.com.au](http://www.realpixelphotography.com.au)